

530 000 €

Occupational local

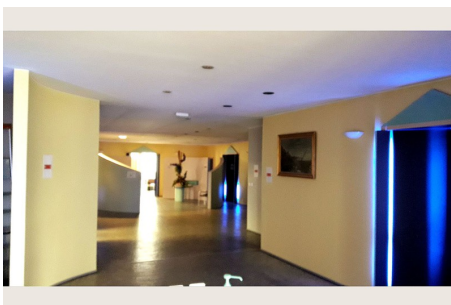
Features :

apartment building

**Local 679 Metz**

FOR SALE - METZ Sablon area In a condominium, at the foot of the building, commercial or office complex with a total surface area of 764 m², currently comprising 2 lots with respective surface areas of 192 m² and 572 m² (excluding basements). The 192 m² premises are currently subject to a commercial lease and are made up of a large room with a partition at the back (for use as a meeting room, for example), 2 separate toilets, a basement of approximately 60 m² + 1 private parking space in the condominium car parks. The 572 m² premises, currently empty, are made up of several rooms (formerly offices), 4 separate toilets and a basement of around 60 m². Outside, private and secure access to a space that can hold 10/12 cars. Each room has its own gas boiler (not currently in operation). The 2 lots can be separated. Immediate proximity to Metz train station (10 mins on foot). Very nice windows and visibility.

Document non contractuel - 08/06/2025



Jama Immobilier - 1 rue des Huilliers - 57000 Metz

T. 03 87 76 16 34 - P. 06 19 14 00 26 - jama.immo@wanadoo.fr - www.jamaimmobilier.com

RCS Metz B 343 577 557 - Code NAF 6810z - SIRET 343 577 557 00022 - Document non contractuel