

708 750 €

Occupational bureau

Surface : 270 m²

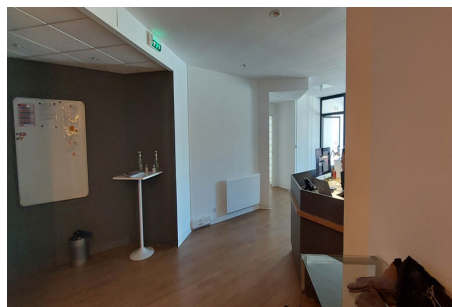
Features :

lift, apartment building, Digicode, intercom

**Bureau 698 Metz**

FOR SALE - METZ (57000) Ideally located in the city center, in a very well-maintained condominium, with elevator, Approximately 270 m² of very bright offices. Ideal for all types of tertiary and/or commercial office activities. Possibility of purchasing additional underground parking spaces. The price indicated is inclusive of fees payable by the purchaser 5% including tax

Document non contractuel - 08/06/2025



Jama Immobilier - 1 rue des Huilliers - 57000 Metz

T. 03 87 76 16 34 - P. 06 19 14 00 26 - jama.immo@wanadoo.fr - www.jamaimmobilier.com

RCS Metz B 343 577 557 - Code NAF 6810z - SIRET 343 577 557 00022 - Document non contractuel