

5 385 € / month

Occupational local

Couverture : cladding

Features :

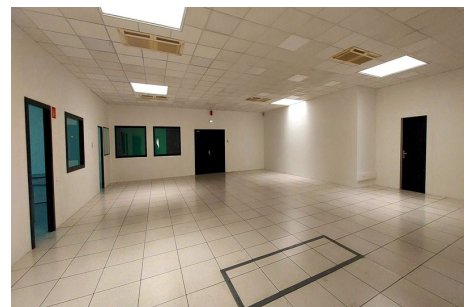
independent building, air conditioning



Local 690 Woippy

FOR RENT Metz-WOIPPY area Very nice commercial or business premises, with a total surface area of approximately 750 m² and comprising an entrance, 7 independent offices, a kitchen, 2 toilet blocks (including 1 with PMR standards), an archive room, a large central space and a large warehouse with sectional door. All in excellent condition and ready to use. Heating by reversible air conditioning. Plenty of parking in front of the building within the enclosed real estate complex. Security deposit: €14,100 Rents, charges and fees are expressed excluding tax. VAT 20% extra.

Document non contractuel - 08/06/2025



Jama Immobilier - 1 rue des Huilliers - 57000 Metz

T. 03 87 76 16 34 - P. 06 19 14 00 26 - jama.immo@wanadoo.fr - www.jamaimmobilier.com

RCS Metz B 343 577 557 - Code NAF 6810z - SIRET 343 577 557 00022 - Document non contractuel