

3 335 € / month

Occupational local

Features :

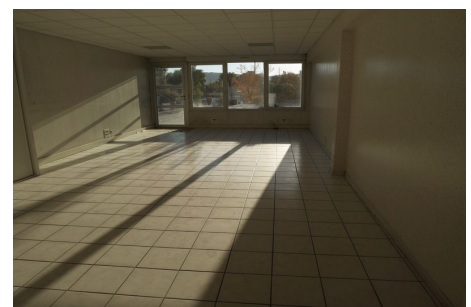
lift, apartment building, intercom



## Local 682 Woippy

FOR RENT METZ-WOIPPY area 300m<sup>2</sup> of professional premises, offices, liberal professions, commercial activities... In a real estate complex made up of 3 lots, with its private parking lots, this space is currently made up of 12 individual AIR-CONDITIONED offices, 1 meeting room, 2 toilets (disabled access)... Access by elevator or stairs to the 1st floor, outdoor terrace, very bright, these premises can evolve according to needs. METTIS STOP IN THE IMMEDIATE VICINITY. 12 private parking spaces. Security deposit: 2 terms of rent. Rents, charges and fees are expressed excluding tax. VAT 20% extra.

Document non contractuel - 08/06/2025



Jama Immobilier - 1 rue des Huilliers - 57000 Metz

T. 03 87 76 16 34 - P. 06 19 14 00 26 - jama.immo@wanadoo.fr - www.jamaimmobilier.com

RCS Metz B 343 577 557 - Code NAF 6810z - SIRET 343 577 557 00022 - Document non contractuel